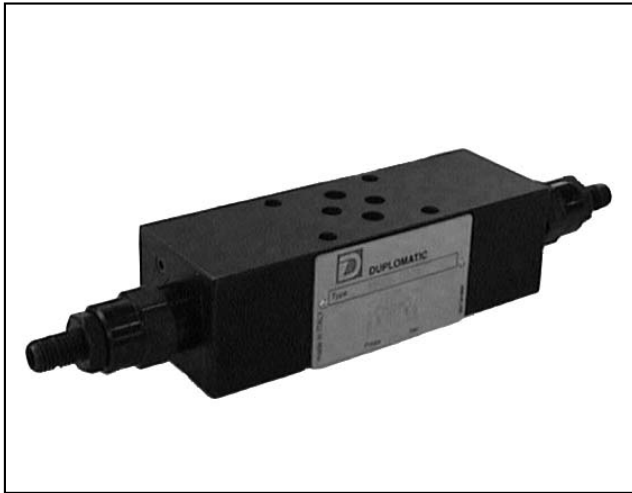




**DIPLOMATIC**  
HYDRAULICS

61 220/104 ED



# MRQ

## PILOT OPERATED PRESSURE RELIEF VALVE

### SERIES 51

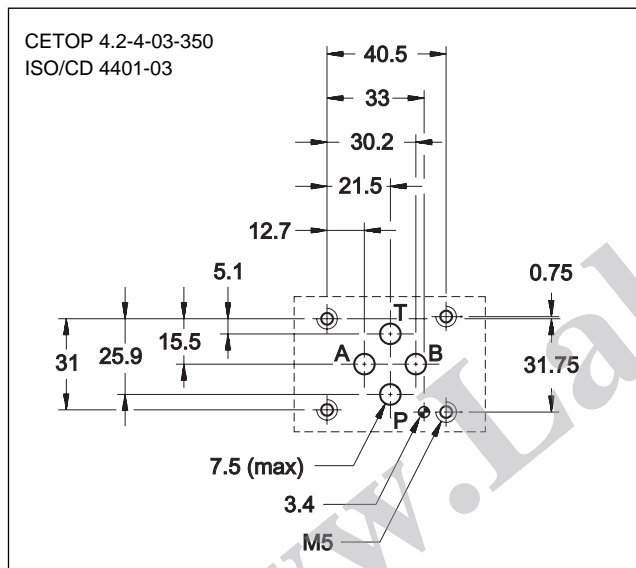
#### MODULAR VERSION

#### CETOP 03

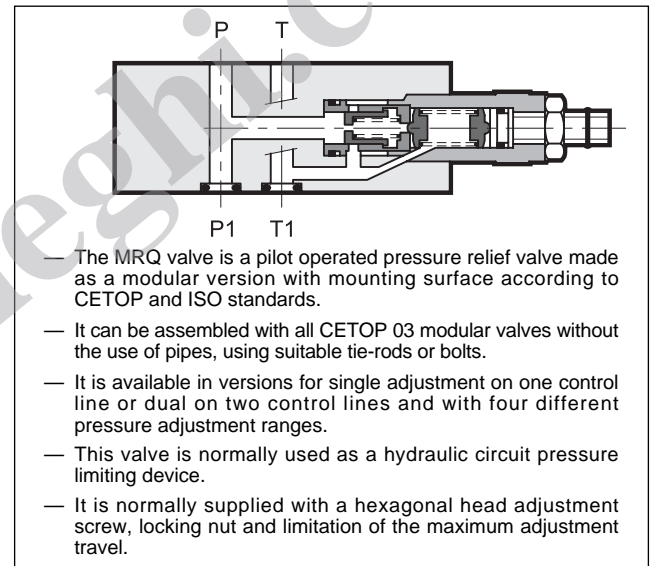
**p max 350 bar**

**Q max 75 l/min**

#### MOUNTING INTERFACE



#### OPERATING PRINCIPLE



#### CONFIGURATIONS (see Hydraulic symbols table)

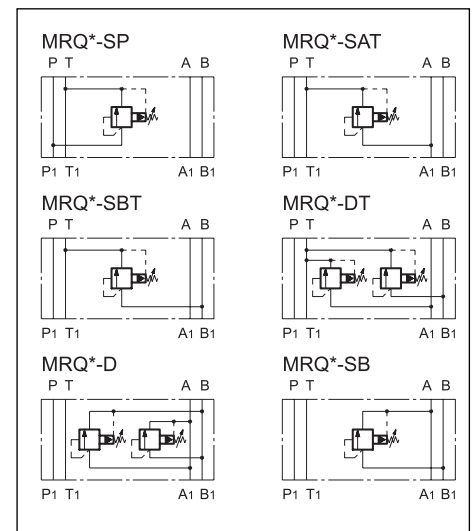
- Configuration "SP": controls the pressure on line P with discharge in T.
- Configuration "SAT": controls the pressure on line A with discharge in T.
- Configuration "SBT": controls the pressure on line B with discharge in T.

- Configuration "DT": controls the pressure on lines A-B with discharge in T.
- Configuration "D": controls the pressure on lines A-B with crossed discharges.
- Configuration "SB": controls the pressure on line B with discharge in A.

#### PERFORMANCE RATINGS (measured with mineral oil of viscosity 36cSt at 50°C)

Maximum operating pressure	bar	350
Minimum controlled pressure	see $\Delta p - Q$ diagram	
Maximum flow rate in the controlled line and in the free lines	l/min	75
Ambient temperature range	°C	-20 ÷ +50
Fluid temperature range	°C	-20 ÷ +80
Fluid viscosity range	cSt	10 ÷ 400
Recommended viscosity	cSt	25
Degree of fluid contamination	According to NAS 1638 class 10	
Mass: MRQ - SP / MRQ - SAT / MRQ - SBT / MRQ - SB	kg	1,4
MRQ - DT / MRQ - D	kg	2,1

#### HYDRAULIC SYMBOLS





## 1 - IDENTIFICATION CODE

	<b>M</b>	<b>R</b>	<b>Q</b>	<b>-</b>	<b>/</b>	<b>/</b>	<b>51</b>	<b>/</b>	
--	----------	----------	----------	----------	----------	----------	-----------	----------	--

CETOP 03 size  
Modular version

Pilot operated pressure relief valve

Pressure adjustment range:  
**3** = up to 70 bar    **5** = up to 210 bar  
**4** = up to 140 bar    **6** = up to 350 bar

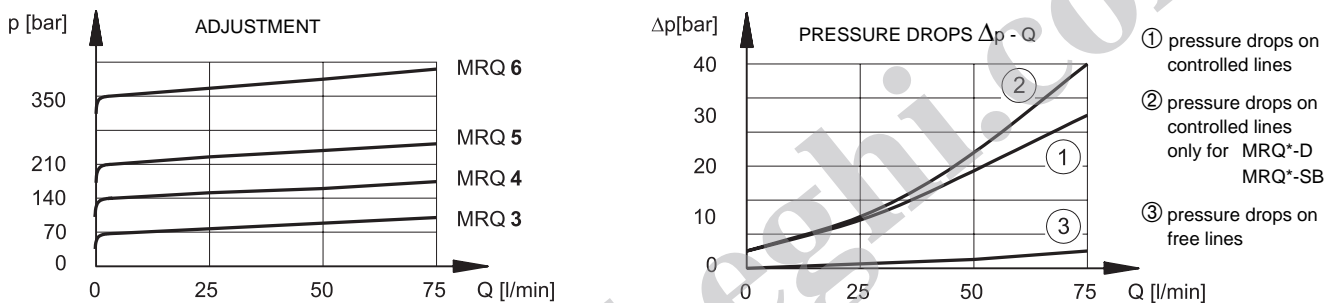
Configurations:  
**SP**: single on line P with discharge in T  
**SAT**: single on line A with discharge in T  
**SBT**: single on line B with discharge in T  
**DT**: double on lines A-B with discharge in T  
**D**: double on lines A-B with crossed discharges  
**SB**: single on line B with discharge in A

Seals:  
omit for mineral oils  
**V** = viton for special fluids

Series No. (the overall and mounting dimensions remain unchanged from 50 to 59)

**M1** = Adjustment knob  
(omit for adjustment with countersunk hex screw)

## 2 - CHARACTERISTIC CURVES (values obtained with viscosity of 36 cSt at 50°C)



## 3 - HYDRAULIC FLUIDS

Use mineral oil-based hydraulic fluids, with the addition of suitable anti-frothing and anti-oxidizing agents. For the use of other types (water glycol, phosphate esters and others), please consult our technical department.

## 4 - OVERALL AND MOUNTING DIMENSIONS

dimensions in mm

1	Locking nut: spanner 17
2	Countersunk hex adjustment screw: spanner 5 Rotate clockwise to increase pressure
3	Mounting surface with sealing rings: 4 OR type 2037
4	Adjustment knob: M1



**DIPLOMATIC OLEODINAMICA SpA**  
 20025 LEGNANO (MI) - P.le Bozzi, 1 / Via Edison  
 Tel. 0331/472111 - Fax 0331/548328